

DIAGRAMMATIC ILLUSTRATION OF THE NAZI ORGANIZATION IN COLOMBIA, SOUTH AMERICA

1940 CENSUS OF FOREIGN-BORN
TOTAL IN EACH DEPARTMENT

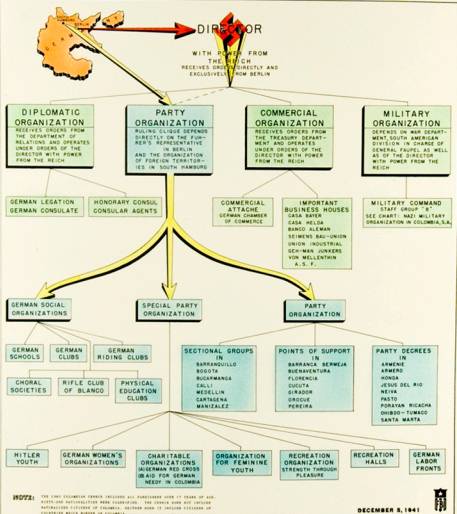


DEPARTAMENTOS	GERMAN	HUNGARIAN	RUSSIAN	ITALIAN	SPANISH	OTHER	TOTAL
BOGOTÁ	10	1	1	1	1	1	6
BARRANQUILLA	10	1	1	1	1	1	6
BUENAVISTA	10	1	1	1	1	1	6
CAJICÁ	10	1	1	1	1	1	6
COLOMBIA	10	1	1	1	1	1	6
GUAYACÁN	10	1	1	1	1	1	6
IBAGUÉ	10	1	1	1	1	1	6
MEDELLÍN	10	1	1	1	1	1	6
PEREIRA	10	1	1	1	1	1	6
QUIBDO	10	1	1	1	1	1	6
VALDIVIA	10	1	1	1	1	1	6
YACOPÁN	10	1	1	1	1	1	6
TOTAL	1,340	1,340	77	1,340	228	1,340	10,768

Key

- FEWER THAN 100
- 100 TO 400
- 401 TO 1,000
- 1,001 AND MORE

COLOMBIA
GERMAN POPULATION IN 1940
1,340
HUNGARIAN POPULATION IN 1940
77
RUSSIAN POPULATION IN 1940
1,340
ITALIAN POPULATION IN 1940
1,340
SPANISH POPULATION IN 1940
228
OTHER POPULATION IN 1940
1,340



DECEMBER 6, 1941

AMERICA IN
WWII
The Magazine Of A People At War 1941-1945

www.americainwwii.com